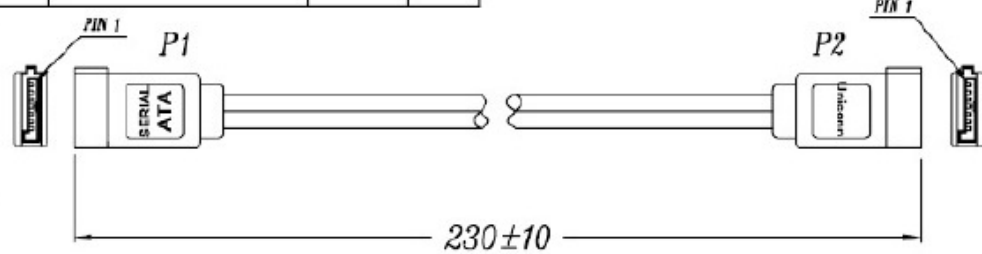
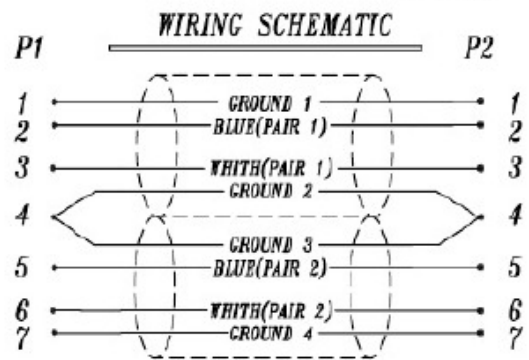


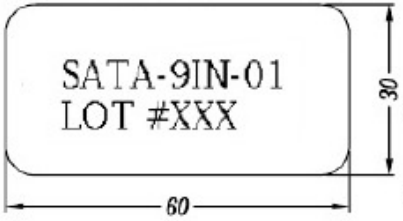
1	2	3	4	5	6	7	8	9
REV.	REMARK	DATE	SIGN.					



NOTES:
1.CABLE:
 CONDUCTOR: 26AWG, SOLID SILVER, PLATED CU ON PAIR #1 & #2.
 INSULATION: CELLULAR POLYOLEFIN.
 SHIELD: FOUR 28AWG SOLID DRAIN WIRES ON PAIR #1 & #2, AND WRAPPED WITH ALUMINUM POLYESTER TAPE.
 OVER JACKET: PVC SEMI-TRANSPARENT. COLOR IN RED, OD: 1.93mm X 7.9mm



LABELLING ON BAG:

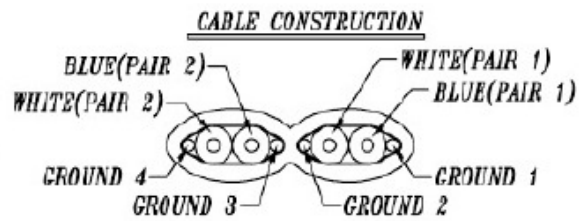


2.ELECTRICAL:
 DIFFERENTIAL IMPEDANCE: 100 +/-5 OHM @TDR
 CAPACITANCE: 12PF/FT NOM.
 RISE TIME: 86PS MAX.
 PROPAGATION DELAY SKEW: 10PS MAX.
 CABLE PAIR MATCHING: +/-5.
 COMMON MODE IMPEDANCE: 50 +/-10% OHM.

3.CONNECTOR: P1, P2 SERIAL ATA 7PIN FEMALE WITH GOLD PLATING

4.FINISHED CABLE ASSEMBLY TESTING CONDITION
 (1)HI-POT TEST: 300V DC FOR 100MSEC AT 100 MOHMS FOR OPEN, SHORTS AND MISWIRES.
 (2)EYE-PATTERN TEST: (TESTER: PATTERN GENERATOR)

A. DATA RATE: 1.5 GIGABITS/SEC.
 B. INPUT SIGNAL : 150 PS RISE TIME.
 C. EYE-PATTERN MASK: 400MV*616PS.



DataStorageCables.com	DESC.	SATA 7 FEMALE TO SATA 7 FEMALE CABLE	APPROVED	CHECKED	DESIGNED	TOLERANCE	SCALE	1 = 1	UNIT	mm	
	P/N	SATA-9IN-01	CUSTOMER P/N			KU		DATE	01/25/06	DWG NO	DWG\RC\1711

1	2	3	4	5	6	7	8	9
---	---	---	---	---	---	---	---	---