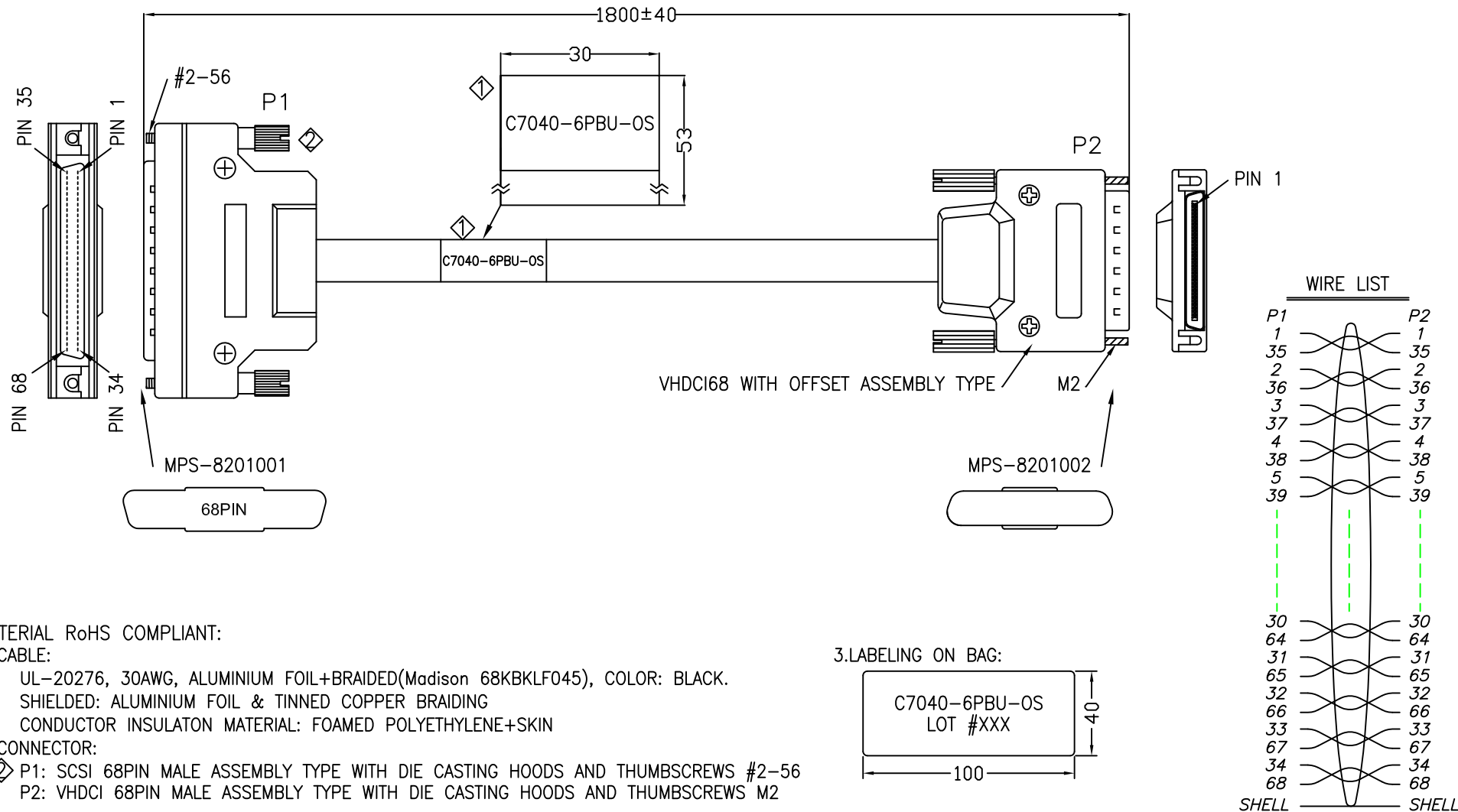


REV.	REMARK	DATE	SIGN.
◇	CORRECT P/N ON CABLE	09/11/'07	SHIU
◇	USE ASSEMBLY TYPE	07/04/'17	Sino

RoHS



MATERIAL RoHS COMPLIANT:

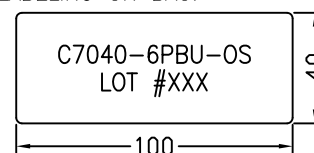
1.CABLE:

UL-20276, 30AWG, ALUMINIUM FOIL+BRAIDED(Madison 68KBKLF045), COLOR: BLACK.
 SHIELDED: ALUMINIUM FOIL & TINNED COPPER BRAIDING
 CONDUCTOR INSULATON MATERIAL: FOAMED POLYETHYLENE+SKIN

2.CONNECTOR:

- ◇ P1: SCSI 68PIN MALE ASSEMBLY TYPE WITH DIE CASTING HOODS AND THUMBSCREWS #2-56
- ◇ P2: VHDCI 68PIN MALE ASSEMBLY TYPE WITH DIE CASTING HOODS AND THUMBSCREWS M2

3.LABELING ON BAG:



Data Storage Cables

DESC.	APPROVED	CHECKED	DESIGNED	TOLERANCE	SCALE	*	UNIT	mm
SCSI 68P (M) TO VHDCI 68P (M) W/THUMB SCREW								
P/N C7040-6PBU-OS			CUSTOMER P/N C7040-6PBU-OS				DATE 10/23/'17	DWG NO: DWG\RC\1802