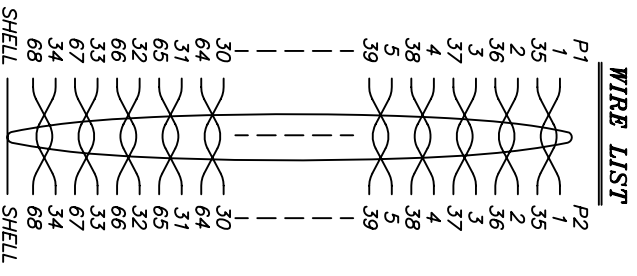
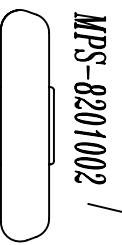
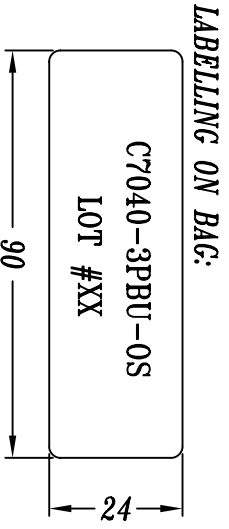
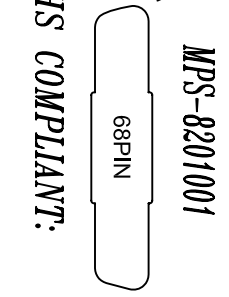
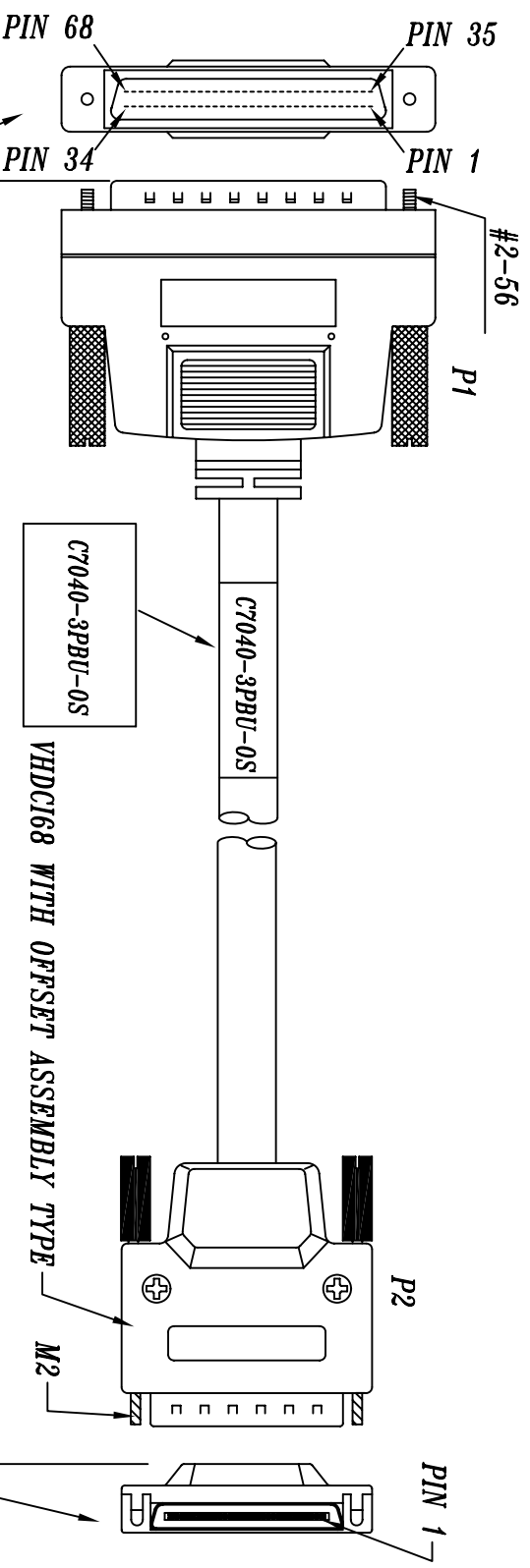


REV.	REMARK	DATE	SIGN.
1	改為RoHS材料	06/22/06	KU.

ROHS



MATERIAL ROHS COMPLIANT:

NOTE:

1. CABLE SPEC.: UL-20276, 30AWG, ALUMINIUM FOIL+BRAIDED(Madison 68KBLF045), BLACK SHIEDED: ALUMINIUM FOIL & TINNED COPPER BRAIDING
2. CONNECTORS: P1 SCSI-3 HPDB 68PIN MALE IDC MODED TYPE W/THUMB SCREW #2-56 CONDUCTOR INSULATION MATERIAL: FOAMED POLYETHYLENE+SKIN
3. CONNECTORS: P2: VHDCl 68PIN MALE ASSEMBLY TYPE W/THUMB SCREW M2

DataStorageCables.com

DESC.	SCSI 68P (M) TO VHDCl 68P (M) W/THUMB SCREW	APPROVED	CHECKED	DESIGNED	TOLERANCE	SCALE	1 = 1	UNIT	mm
P/N	C7040-3PBU-0S CUSTOMER P/N			KU.	XX : ±0.1 XXX : ±0.05 XXX : ±0.02	DATE	07/27/06	DWG NO.	DWG/AC/1563