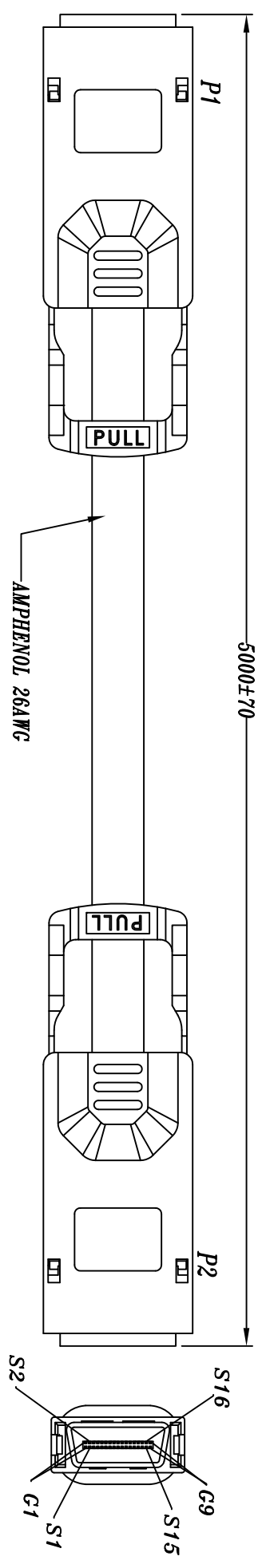
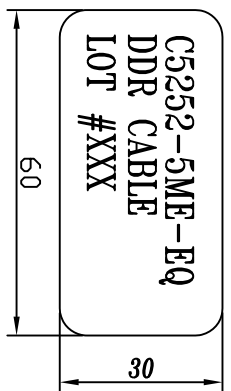


REV.	REMARK	DATE	SIGN.
------	--------	------	-------



WIRING DIAGRAM

P1		P2	
PIN NO.	SIGNAL	PIN NO.	SIGNAL
G1 - G9	GROUND	G1 - G9	GROUND
S1	RX0+	S16	TX0+
S2	RX0-	S15	TX0-
S3	RX1+	S14	TX1+
S4	RX1-	S13	TX1-
S5	RX2+	S12	TX2+
S6	RX2-	S11	TX2-
S7	RX3+	S10	TX3+
S8	RX3-	S9	TX3-
S9	TX3-	S8	RX3-
S10	TX3+	S7	RX3+
S11	TX2-	S6	RX2-
S12	TX2+	S5	RX2+
S13	TX1-	S4	RX1-
S14	TX1+	S3	RX1+
S15	TX0-	S2	RX0-
S16	TX0+	S1	RX0+
CONNECTOR SHELL		CONNECTOR SHELL	



LABELLING ON BAG:

- PAIR COMPONENT:
CONDUCTOR: 26AWG SOLID SILVER PLATED.
DRAIN WIRE: 27AWG SOLID TINNED COPPER.
PAIR SHIELD: ALUMINUM/POLYESTER TAPE. ALUMINUM SIDE FACING IN, 20% OVERLAP
- FINAL ASSEMBLY:
CORE: 8 PAIRS NUMBERED 1 THRU 8.
INNER SHIELD: ALUMINUM/POLYESTER TAPE, ALUMINUM SIDE FACING OUT, 20% OVERLAP.
OUTER SHIELD: 36WG TIN PLATED COPPER BRAID, 85% COVERAGE.
DIAMETER: 9.78MM NOMINAL, COLOR: BLACK
DIFFERENTIAL IMPEDANCE: 100±5 OHMS @TDR
MUTUAL CAPACTTANCE: 42PF/M NOMINAL.
TIME DELAY: 4.25NS/M.
- CONNECTOR & HOOD:
P1 & P2 :INFINIBAND 4X PLUG - EJECTOR TYPE
(1)HOUSING- ZINC DIE CAST
(2)CONTACTS- 30u" INCHES GOLD PLATING
WITH EQ
- FOR DDR USE, TESTING CONDITION - 5G

DataStorageCables.com

1	2	3	4	5	6	7	8	9
---	---	---	---	---	---	---	---	---

DESC.	4X/4X CABLE EJECTOR TYPE	APPROVED	CHECKED	DESIGNED	TOLERANCE	SCALE	1 = 1	UNIT	mm
P/N	C5252-5ME-EQ			Ku.		DATE	10/21/05	DWG NO.	DMG\B\1823