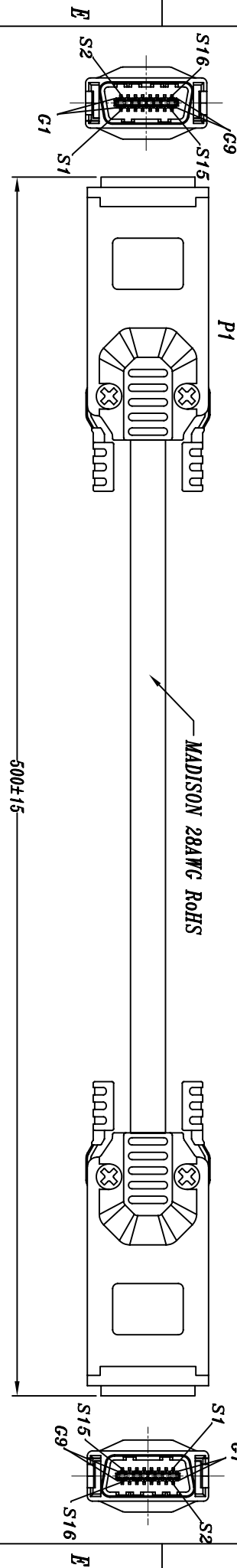
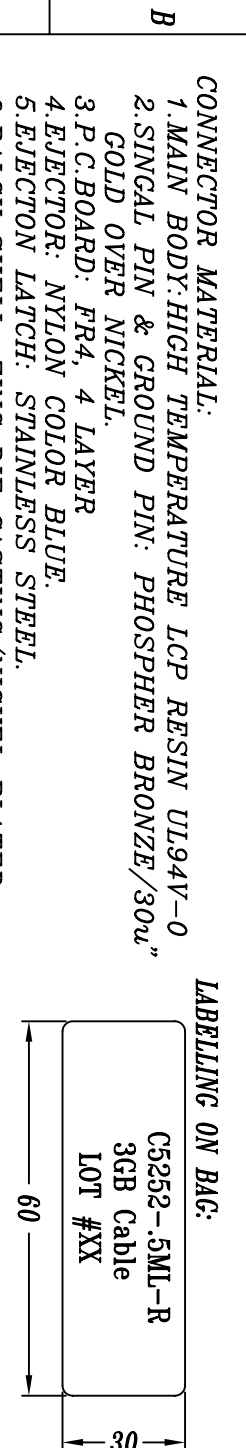


1	2	3	4	5	6	7	8	9
REV.	REMARK	DATE	SIGN.					



**MATERIAL (ROHS COMPLIANT)-**  
**CABLE SPEC:**  
 CONDUCTOR: 28AWG SOLID SILVER PLATED COPPER, 0.320mm DIAMETER.  
 INSULATION: 0.3048mm OF FOAM POLYOLEFIN, 0.939mm DIAMETER, COLOR-NATURAL.  
 PAIR: 2 SINGLES LAID FLAT AND PARALLEL.  
 PAIR DRAIN WIRE: 30AWG SOLID SILVER PLATED COPPER.  
 PAIR SHIELD: ALUMINUM/POLYESTER TAPE. ALUMINUM SIDE FACING IN, 25% OVERLAP.  
 INNER SHIELD: ALUMINUM/POLYESTER TAPE, ALUMINUM SIDE PACING OUT, 25% OVERLAP.  
 OUTER SHIELD: 38AWG TIN PLATED COPPER BRAID, 85% COVERAGE.  
 DIAMETER: 7.874mm NOMINAL.  
 PRINT LEGEND: "MADISON CABLE CORP. TYPE CL2 75°C 28AWG (UL) TurboTwin™ LEAD-FREE"  
 DIFFERENTIAL IMPEDANCE: 100±5 OHMS @TDR  
 UL LISTING: TYPE CL2 AS SPECIFIED IN ARTICLE 725 OF THE NATIONAL ELECTRICAL CODE.

**CONNECTOR MATERIAL:**  
 1. MAIN BODY: HIGH TEMPERATURE LCP RESIN UL94V-0  
 2. SINGAL PIN & GROUND PIN: PHOSPHER BRONZE/30u"  
 GOLD OVER NICKEL.  
 3. P.C. BOARD: FR4, 4 LAYER  
 4. EJECTOR: NYLON COLOR BLUE.  
 5. EJECTON LATCH: STAINLESS STEEL.  
 6. BALCK SHELL: ZINC DIE CASTING/NICKEL PLATED.  
 3.FOR 3GB/SEC SAS USE



**LABELLING ON BAG:**  
 C5252-.5ML-R  
 3GB Cable  
 LOT #XXX

WIRING DIAGRAM			
P1	P2		
PIN NO.	SIGNAL	PIN NO.	SIGNAL
G1 - G9	GROUND	G1 - G9	GROUND
S1	RX0+	S16	TX0+
S2	RX0-	S15	TX0-
S3	RX1+	S14	TX1+
S4	RX1-	S13	TX1-
S5	RX2+	S12	TX2+
S6	RX2-	S11	TX2-
S7	RX3+	S10	TX3+
S8	RX3-	S9	TX3-
S9	TX3+	S8	RX3-
S10	TX3+	S7	RX3+
S11	TX2-	S6	RX2-
S12	TX2+	S5	RX2+
S13	TX1-	S4	RX1-
S14	TX1+	S3	RX1+
S15	TX0-	S2	RX0-
S16	TX0+	S1	RX0+
CONNECTOR SHELL		CONNECTOR SHELL	

DESC.	4X/4X CABLE (ROHS)	APPROVED	CHECKED	DESIGNED	TOLERANCE	SCALE	1 = 1	UNIT	mm
P/N	C5252-.5ML-R CUSTOMER P/N			SHH		DATE	07/25/07	DWG NO.	DWG\RC\2502

1	2	3	4	5	6	7	8	9	
DataStorageCables.com									