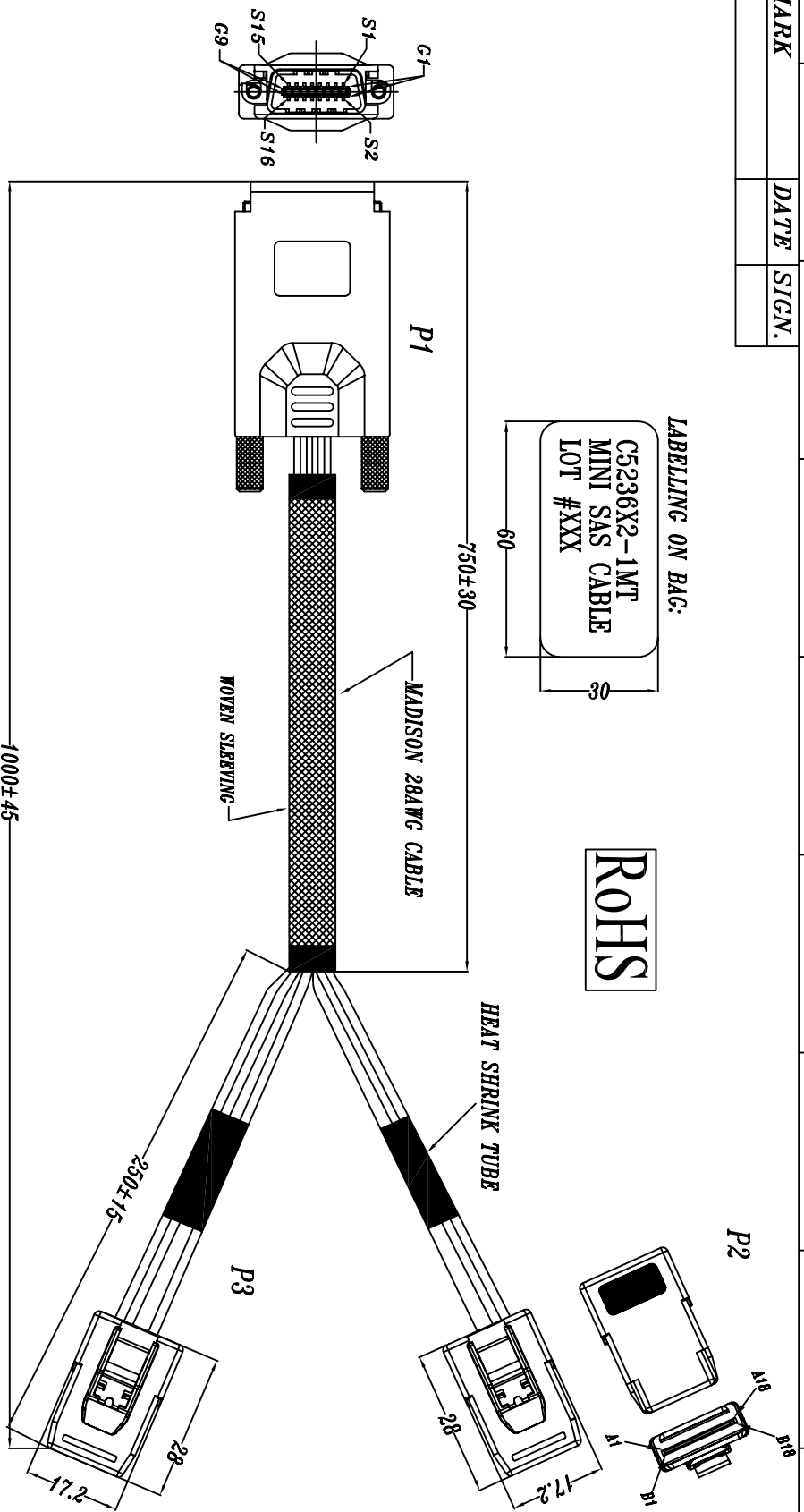


REV.	1	2	3	4	5	6	7	8	9
REMARK									
DATE									
SIGN.									

LABELLING ON BAG:
 C5236X2-1MT
 MINI SAS CABLE
 LOT #XXX

ROHS



MATERIAL ROHS COMPLIANT:

CABLE:
ELECTRICAL:
 IMPEDANCE: 100±5 ohm (DIFFERENTIAL TDR)
 CAPACITANCE: 14pF/ft NOMINAL
 TIME DELAY: 1.35ns/ft NOMINAL
 SKEW (WITHIN PAIR): ≤ 120ps/7M MAXIMUM
 ATTENUATION (NOMINAL): 10 dB/7M MAXIMUM @1.25GHz
APPROVALS:
 UL AWM VW-1 80°C 30V, ROHS COMPLIANT, MADISON 28 AWG

CONNECTOR:

P1: 4X THUMBSCREWS TYPE CONNECTOR (SFF-8470) :
 (1) HOUSING - ZINC DIE CAST
 (2) CONTACTS - 30u" INCHES GOLD PLATING

P2&P3: Mini SAS 4i CABLE PLUG - 36CKT CONNECTOR (SFF-8087)
 1. HOOD: NYLON 30% GLASS FIBRE
 2. LATCH: STAINLESS STEEL
 3. P.C.B.: FR4
 4. INTERNAL, W/O SIDEBAND.

DataStorageCables.com

DESC.	SAS 4X 70 Mini SAS 4i *2	APPROVED	CHECKED	DESIGNED	TOLERANCE	SCALE	1 = 1	UNIT	mm
P/N	C5236X2-1MT	CUSTOMER P/N		SHIP		DATE	03/12/08	DWG NO.	DWG RC/2759

1	2	3	4	5	6
REV.	REMARK	DATE	SIGN.		

WIRING DIAGRAM

SAS 4x			MINI SAS 4i		
PLUG	PIN	SIGNAL	PLUG	PIN	SIGNAL
P1	S16	TX0+	P2	A2	RX0+
	S15	TX0-		A3	RX0-
	S14	TX1+		A5	RX1+
	S13	TX1-		A6	RX1-
	S1	RX0+		B2	TX0+
	S2	RX0-		B3	TX0-
	S3	RX1+		B5	TX1+
	S4	RX1-		B6	TX1-
	G1-G9	GND		GND GROUP	GND
P3	S12	TX2+	P3	A2	RX0+
	S11	TX2-		A3	RX0-
	S10	TX3+		A5	RX1+
	S9	TX3-		A6	RX1-
	S5	RX2+		B2	TX0+
	S6	RX2-		B3	TX0-
	S7	RX3+		B5	TX1+
	S8	RX3-		B6	TX1-
	G1-G9	GND		GND GROUP	GND

P2,P3 GND GROUP:
A1,4,7,12,15,18
B1,4,7,12,15,18

DESC. SAS 4X 70 Mini SAS 4i *2		CUSTOMER P/N	
P/N C3236X2-1MT	APPROVED	CHECKED	DESIGNED
SHIU	SHIU	SHIU	SHIU
DATE 08/12/08	SCALE 1 = 1	UNIT mm	
DATE 08/12/08		DWG. NO. DWG. AC12759	

DataStorageCables.com