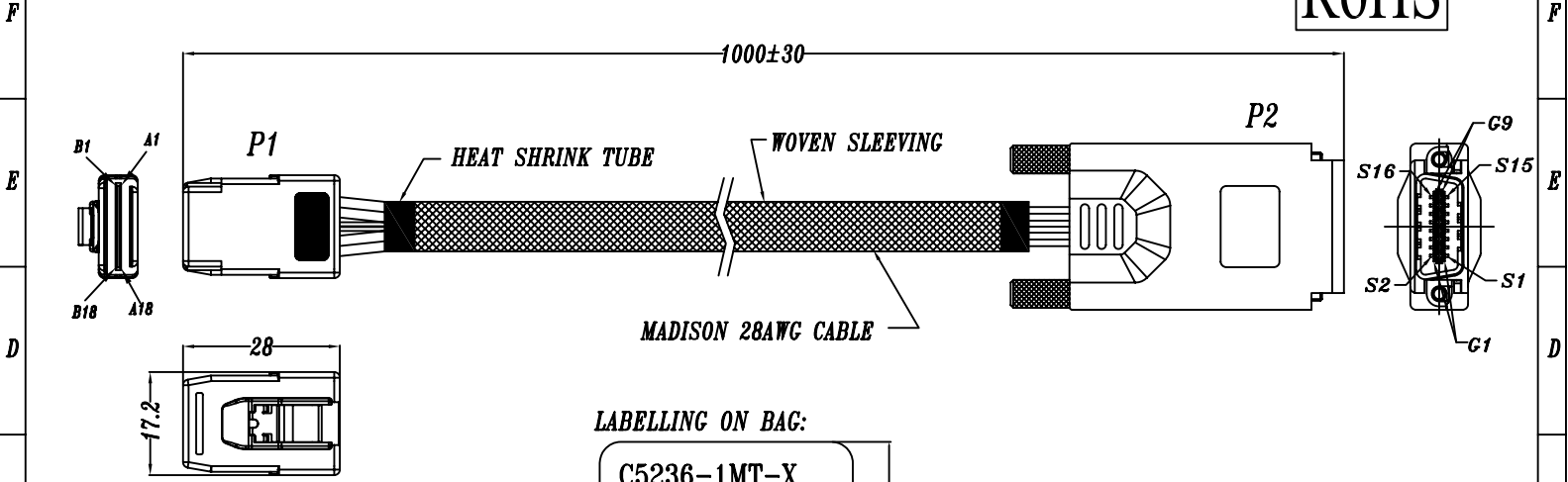


1	2	3	4	5	6	7	8	9
REV.	REMARK	DATE	SIGN.					

RoHS



LABELLING ON BAG:

C5236-1MT-X
MINI SAS CABLE
LOT #XXX

MATERIAL RoHS COMPLIANT:
CABLE:

ELECTRICAL:
 IMPEDANCE: 100±5 ohm(DIFFERENTIAL TDR)
 CAPACITANCE: 14pF/ ft NOMINAL
 TIME DELAY: 1.35ns/ ft NOMINAL
 SKEW(WITHIN PAIR): ≤ 120ps/ 7M MAXIMUM
 ATTENUATION (NOMINAL): 10 dB/ 7M MAXIMUM @1.25GHz
APPROVALS:
 UL AWM VW-1 80°C 30V, RoHS COMPLIANT

CONNECTOR:

P1: Mini SAS 4i CABLE PLUG - 36CKT CONNECTOR
 1. HOOD: NYLON 30% GLASS FIBRE
 2. LATCH: STAINLESS STEEL
 3. P.C.B.: FR4
 4. INTERNAL, WITH SIDEBAND.
P2: 4X THUMBSCREWS TYPE CONNECTOR:
 (1)HOUSING- ZINC DIE CAST
 (2)CONTACTS- 30u" INCHES GOLD PLATING

DataStorageCables.com	DESC.	MINI-SAS 36PIN TO SAS 4X CABLE	APPROVED	CHECKED	DESIGNED	TOLERANCE	SCALE	1 = 1	UNIT	mm	
	P/N	C5236-1MT-X	CUSTOMER P/N			KU	DATE	01/08/07	DWG NO:	DWG\B\1324	

1 2 3 4 5 6 7 8 9

	1	2	3	4	5	6
REV.	REMARK		DATE	SIGN.		

WIRING DIAGRAM					
MINI SAS 4i(HOST)			SAS 4x(TARGET)		
REC.	PIN	SIGNAL	REC.	PIN	SIGNAL
P1	A2	RX0+	P2	S16	TX0+
	A3	RX0-		S15	TX0-
	A5	RX1+		S14	TX1+
	A6	RX1-		S13	TX1-
	A13	RX2+		S12	TX2+
	A14	RX2-		S11	TX2-
	A16	RX3+		S10	TX3+
	A17	RX3-		S9	TX3-
	B2	TX0+		S1	RX0+
	B3	TX0-		S2	RX0-
	B5	TX1+		S3	RX1+
	B6	TX1-		S4	RX1-
	B13	TX2+		S5	RX2+
	B14	TX2-		S6	RX2-
	B16	TX3+		S7	RX3+
	B17	TX3-		S8	RX3-
	GND GROUND			GND GROUND	
A1,4,7,12,15,18			G1-G9		
B1,4,7,12,15,18					

A	DataStorageCables.com		DESC.	MINI-SAS 36PIN TO SAS 4X CABLE			
			P/N	C5236-1MT-X	CUSTOMER P/N		
			APPROVED	CHECKED	DESIGNED	TOLERANCE	SCALE 1 = 1
			DATE 01/08/07		DWG NO:	DWG\B\1324	